



BASE MATERIALS

- Dry wall.
- Concrete block
- Hollow bricks

APPLICATIONS

- Fixing of pieces on dry wall.
- Fixing on hollow materials like concrete block.



BENEFITS

- High resistance in dry wall.
- Fast installation, only 2 steps: drill and insert.
- Model with threaded rod and threaded hook.
- Toggle with sharp shape for a better installation.
- Components:
 - BE: toggle, threaded rod, 2 nuts and washer.
 - BG: toggle, threaded hook, 2 nuts and washer.
- Material:
 - All components made of steel white zinc plated (min. 5 microns).

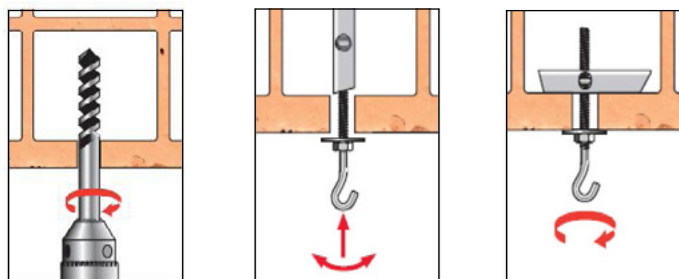
MAIN DIMENSIONS [mm]

Ref.	Metal piece length	Metal piece width	Threaded length threaded rod	Washer diameter
BE/BG M4	54	7,5	100	26
BE/BG M5	69	8	100 (110*)	26
BE/BG M6	80	9,5	100 (110*)	30

INSTALLATION PARAMETERS

Ref.	D ₀ drill bit [mm]	Thread	Min. hole depth
BE/BG M4	11	M4	55
BE/BG M5	14	M5	70
BE/BG M6	16	M6	80

INSTALLATION PROCEDURE



RECOMMENDED LOADS [KN]

Ref.	Drywall 9mm	Drywall 12.5mm	Drywall 15mm
BE M4	10	15	15
BEM5	15	20	20
BE M6	20	25	25
BG M4	10	10	10
BG M5	15	15	15
BG M6	20	20	20

Safety factor included

● ● ● **Small Things Matter** ● ●